



SHADE COLOURS: RUBY & SNOW

**Acoustek**

E: [sales@acoustek.com.au](mailto:sales@acoustek.com.au)

Ph: +61(0) 418 792 788

Web: [www.acoustek.com.au](http://www.acoustek.com.au)

## Halo Acoustic Light Unit

---

It is well understood within acoustic engineering that ceiling-suspended absorbers are highly efficient, as sound reaches them from all directions. A suspended absorber can significantly outperform the same material fixed directly to a wall.

Acoustic lighting therefore becomes an intelligent dual-purpose solution — simultaneously reducing reverberant noise while delivering functional illumination.

Halo's curved cylindrical forms create multi-angled sound interaction, improving absorption of mid to high frequency reverberation and reducing harsh reflected sound within a space. Unlike flat adhered PET panels, Halo's suspended geometry allows both internal and external acoustic engagement for greater overall efficiency.

# The Power of Three

Designed specifically with open acoustic entry zones and pressure-relief cavities, the Halo Trio configuration enhances sound interaction throughout the fitting. The clustered arrangement of three suspended drums contributes noticeable improvements in:

- **Speech clarity**
- **Workplace intelligibility**
- **Occupant comfort**
- **Reduction of reflected ceiling noise**

The latter being an often overlooked contributor to acoustic fatigue within commercial interiors.

A practical benchmark for the Halo Trio is their ability to outperform several square metres of directly adhered PET panelling.

At the same time, they give interior designers greater freedom to blend or contrast colours, heights, and spatial composition.

Architecturally, Halo presents a lighter and softer visual presence while remaining highly space-efficient.

Importantly, as with all Acoustek acoustic lighting products, Halo is:

- **Fully re-locatable**
- **Recyclable**

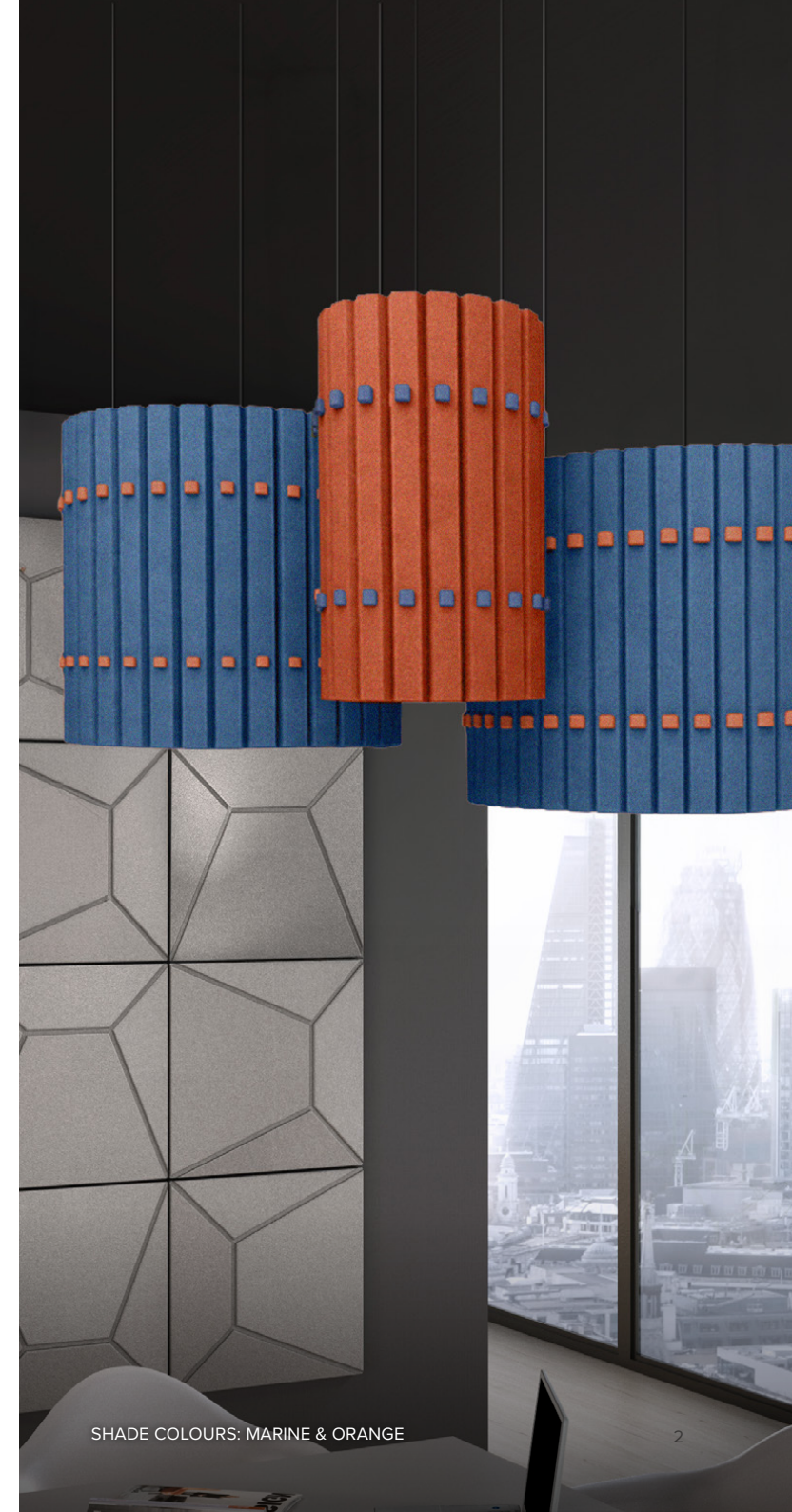
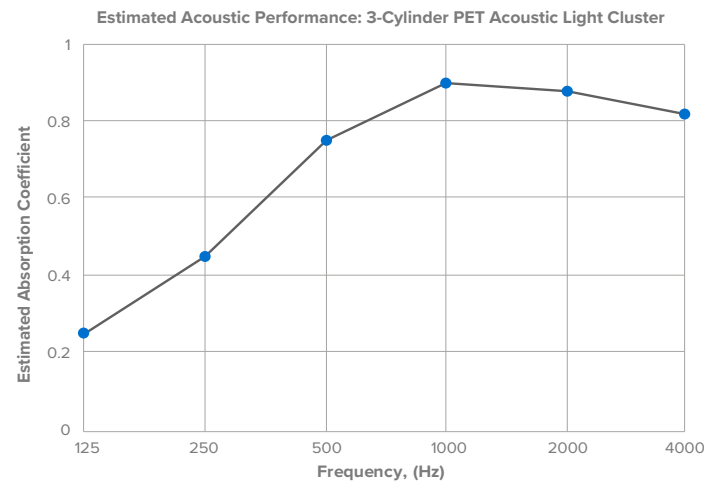
Acoustek's 'Halo Trio' will deliver long-term acoustic performance without the waste and permanence associated with conventional adhered acoustic treatments.

## Performance example

Estimated cluster absorption: approx 2.0 - 3.0 Sabins per cluster.

Estimated NRC equivalent: approx 0.65 to 0.95 depending upon room conditions & suspension density.

Frequency /Hz	Estimated Absorption Coefficient
125	0.25
250	0.45
500	0.75
1000	0.90
2000	0.88
4000	0.82

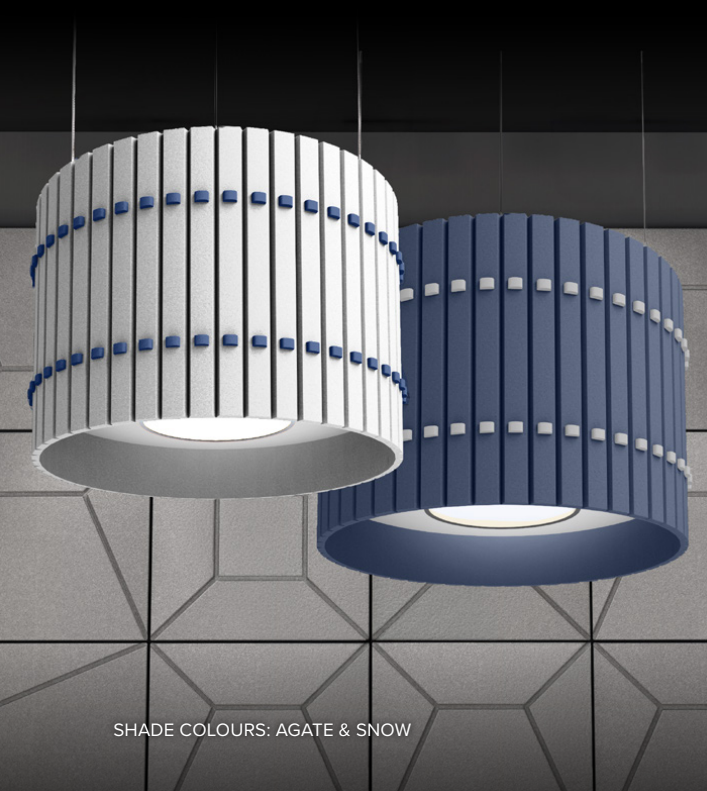


## Sustainable Design

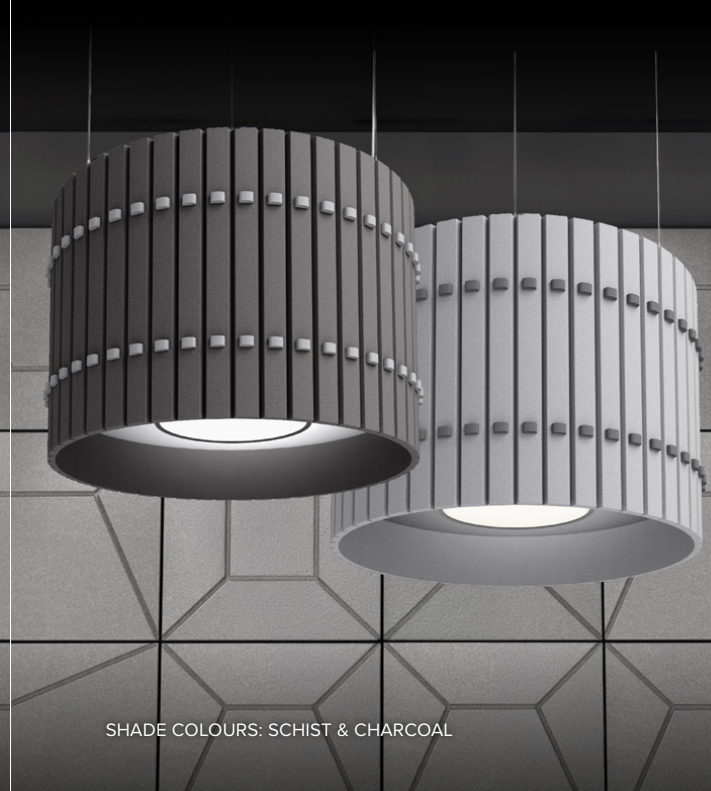
Acoustek 3D Lights, Beams, Blades, Tiles and Acoustic Screens are certified GreenTagCert™ GreenRate Level A.

AS standards and BS standards:  
AS 1530.3, AS 3837, BS 476

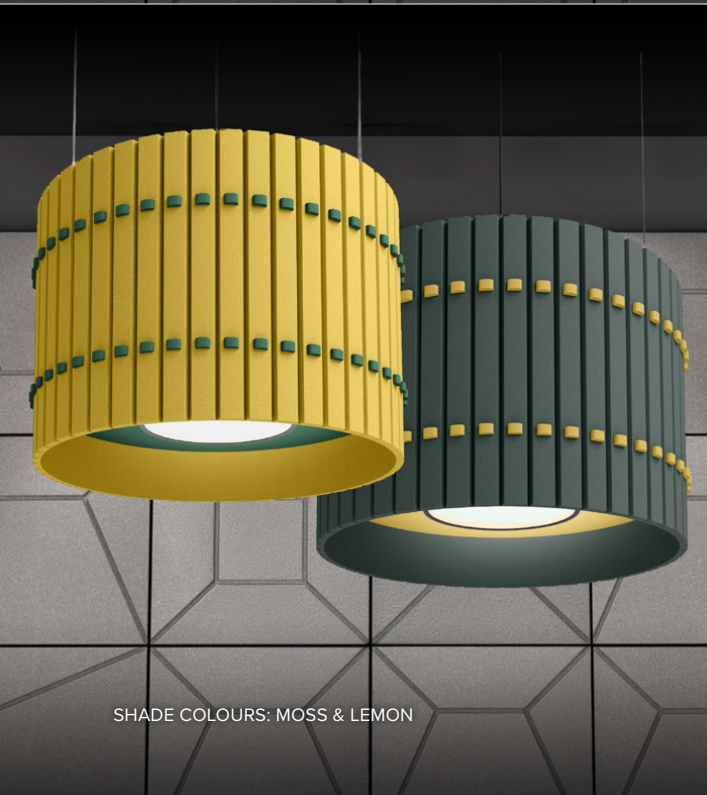
Suitable for use in Green Star™ projects. GreenTagCert™ is a certification and rating tool for building professionals approved by the Green Building Council of Australia (GBCA Physical).



SHADE COLOURS: AGATE & SNOW



SHADE COLOURS: SCHIST & CHARCOAL



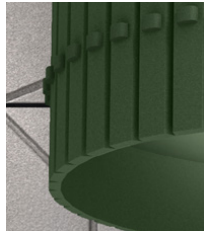
SHADE COLOURS: MOSS & LEMON



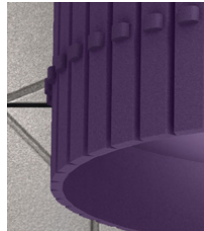
SHADE COLOURS: BISCUIT & MULBERRY

Melting point:	250°C
Vapour pressure:	Not applicable
Volatiles:	Nil
Flash point:	None allocated
Other properties:	Non-allergenic, low irritant, low flame response, resilient
Ingredients:	Organic, long chain synthetic polymers
Max service temp:	110°C
Alkalinity:	pH 7.8 (pH 7 is neutral)
Moisture absorption:	Exposure to an atmosphere of 50°C and 95% RH for four days gives moisture absorption of less than 0.2% by volume
Fire Hazard Properties:	The following results were obtained when subjected to early fire hazard testing in accordance with Australian Standards AS 1530.3 Ignitability: 7   Spread of Flame: 0 Smoke Developed: 5   Heat Evolved: 2

# Halo Acoustic Light Unit - Decorative Finishes



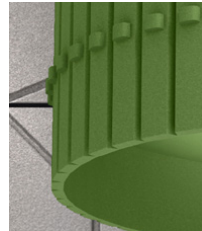
AMAZONITE



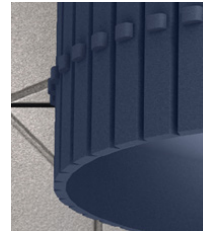
AUBERGINE



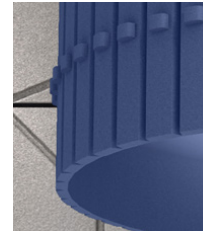
RUBY



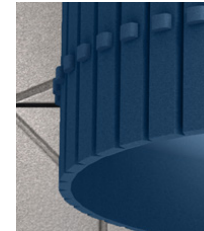
APPLE



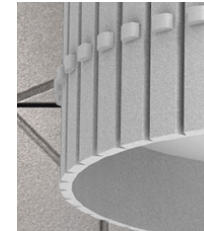
AGATE



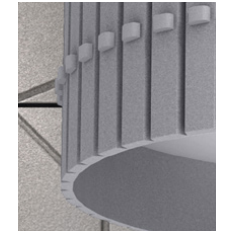
LAPIS



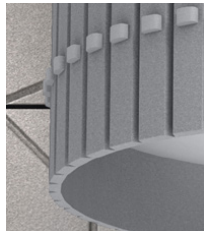
MARINE



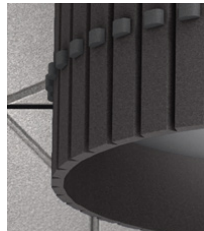
SNOW



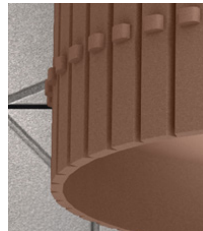
FLANNEL



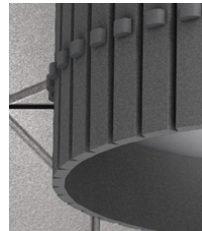
SCHIST



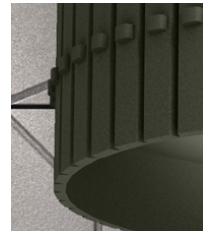
CHARCOAL



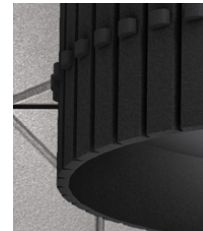
PUMICE



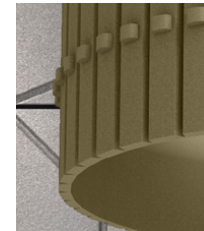
SLATE



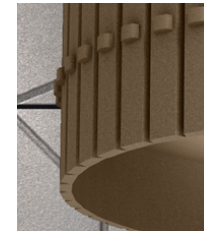
WHETSTONE



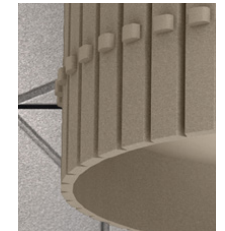
EBONY



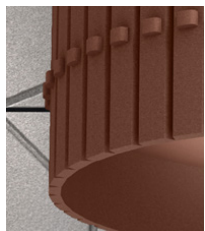
GRANITE



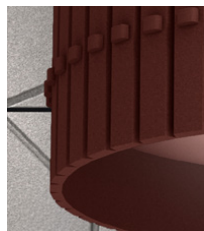
PEBBLE



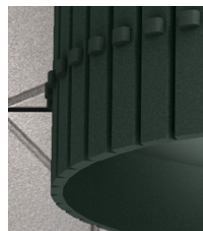
BISCUIT



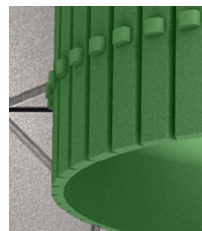
DULSE



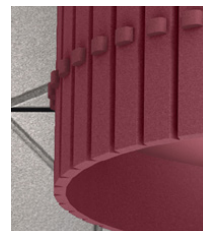
MULBERRY



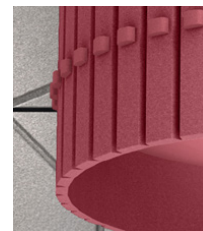
MOSS



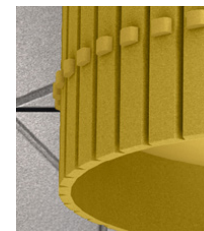
LIME



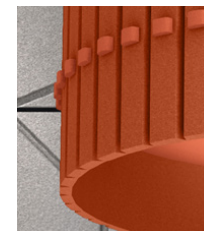
ROSE



BLUSH



LEMON



ORANGE