

The Porto Collection

Design Led Acoustics

By intertwining acoustic functionality with design freedom, The Porto Collection has been designed to make a contemporary statement whilst adding the benefits of acoustics to any interior space.

With interchangeable patterns and the choice of two ranges, the Essentials range incorporates all the acoustic capabilities of CSR Martini products into simple, classic designs integrating within any environment. Our Signature collection offers a design-led focus with more bespoke, unique patterns that turn engineered auditory control into art. A simple yet light-weight option, The Porto modular 3D tiles will control background distractions, reduce reverberated noise and maintain acoustic balance.



The Porto Collection

Essentials

Gallery →

The Essentials Range

gives you the flexibility to use each 3D tile design individually on a wall or combine patterns together to create a stronger more defined movement. Each design has the flexibility to create endless unique looks that allow you to change the look and feel of a room at any time.



The Porto Collection - Essentials Air and Wind tiles



Water

Specifications

Model	Water	
Code	MEC5	MEC1
Size (mm)	500x500x30	500x500x50
Box Qty	9	9
NRC with 30mm Infill	0.70	0.95
NRC	0.50	0.75



Air

Specifications

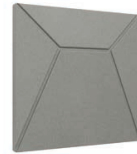
Model	Air	
Code	MEC3	
Size (mm)	500x500x50	
Box Qty	9	
NRC with 30mm Infill	0.85	
NRC	0.65	



Earth

Specifications

Model	Earth	
Code	MEC2	
Size (mm)	500x500x50	
Box Qty	9	
NRC with 30mm Infill	0.80	
NRC	0.60	



Wind

Specifications

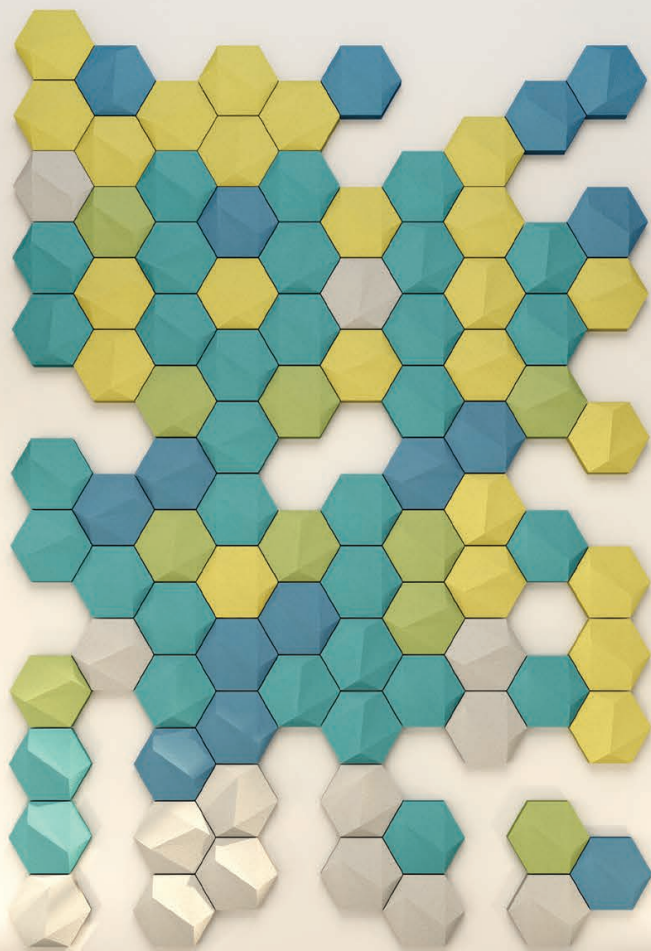
Model	Earth	
Code	MEC4	
Size (mm)	500x500x50	
Box Qty	9	
NRC with 30mm Infill	0.80	
NRC	0.60	

Physical description and properties

Product Name:	Porto		
Composition Blade:	100% Polyester Fibre (PET)		
Box Coverage:	Essentials range: 2.26m ³ Signature range: 2.2m ³		
Tile Depth:	Varied based on design, see individual tile tables in brochure.		
Tolerance:	+/- 2mm in size or thickness		
Installation:	Essentials range: Installation template provided with tiles at time of delivery. Signature range: As this range allows you to create your own design an installation guide will be provided with the tiles at time of delivery.		
Intended Use:	Porto Collection is suitable for indoor use only. Suitable for wall applications.		
Moisture absorption:	Exposure to an atmosphere of 50°C and 95% RH for four days gives moisture absorption of less than 0.2% by volume.		
Acoustic Performance:	The Porto Collection has been designed to reduce and control reverberated (echo) noise within interior spaces. See individual tile tables in brochure for NRC results.		
Fire resistance:	Tested to AS ISO 9705 Corner Burn in accordance with AS 5637.1	Group 1 SMOGRA not more than 100m ² /s ² x 1000	
	The following results were obtained when CSR Martini products was subjected to early fire hazard testing in accordance with Australian Standards AS 1530.3	Ignitability Spread of Flame Heat Evolved Smoke Developed	0 0 0 0-1
Decorative Finishes:	3D Tiles from the Porto Collection are available in 16 colours from our dECO Embrace Range.		

The Porto Collection

Signature



The Signature Range

allows you to elevate any wall with the design freedom to create unique looks that can either blend into the environment or make a statement. A simple yet light-weight option, these 3D tiles will reduce reverberated noise and maintain acoustic balance.

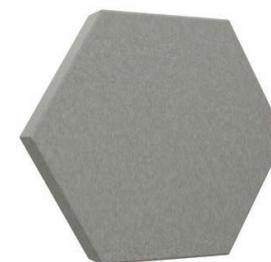
Abstract



Specifications

Model	Abstract
Code	MSC1
Size (mm)	300x346x70
Box Qty	8
MOQ Qty	3 Boxes
NRC with 40mm Infill	0.95
NRC No Infill	0.75

Geo



Specifications

Model	GEO
Code	MSC2
Size (mm)	300x346x40
Box Qty	8
MOQ Qty	3 Boxes
NRC with 40mm infill	0.95
NRC No Infill	0.75

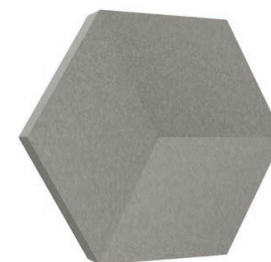
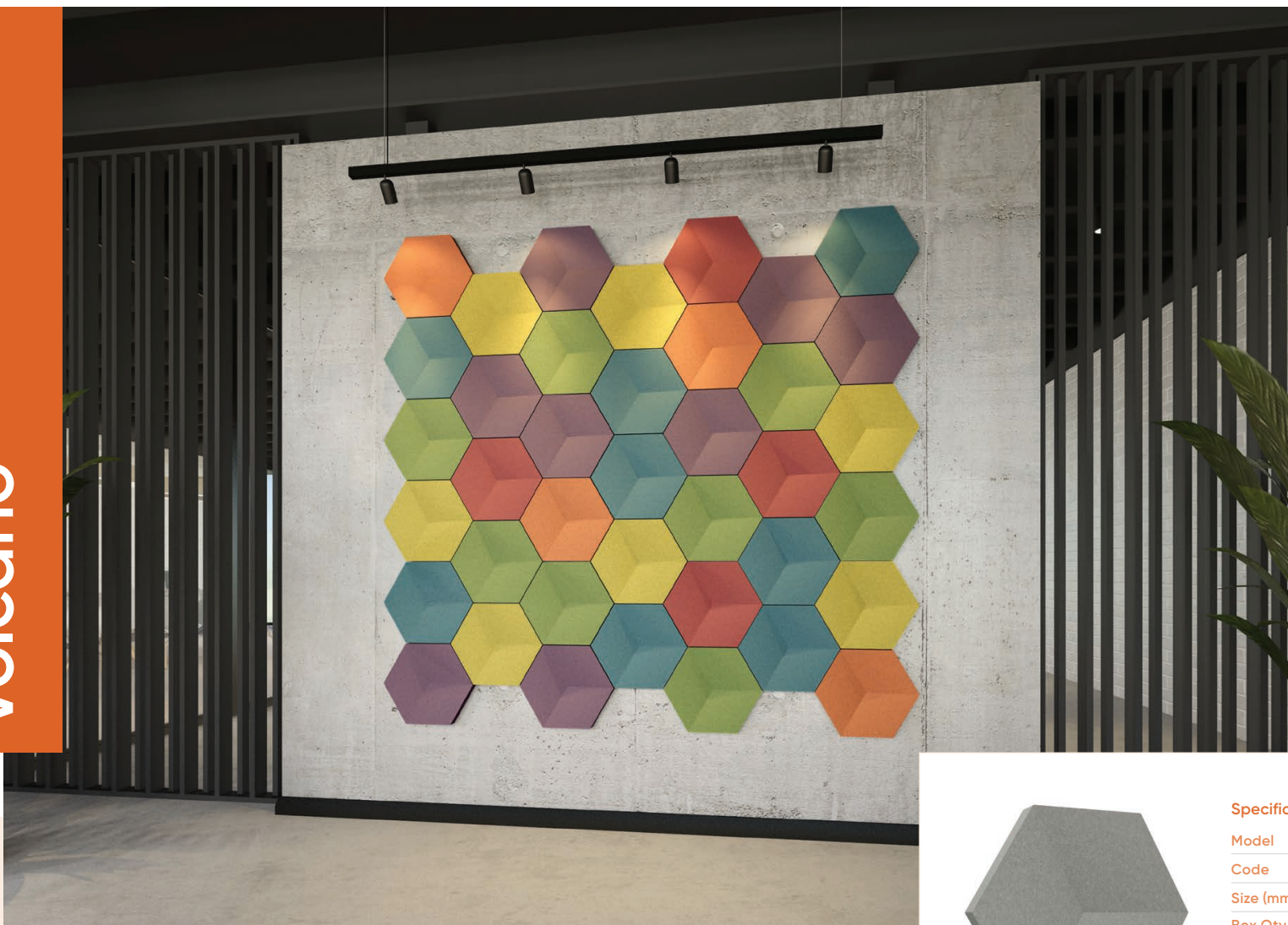
Rapid



Specifications

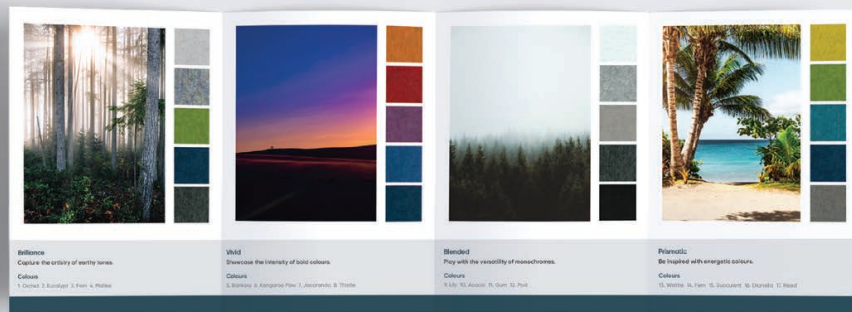
Model	Rapid
Code	MSC3
Size (mm)	300x346x70
Box Qty	8
MOQ Qty	3 Boxes
NRC with 40mm Infill	0.95
NRC No Infill	0.75

Volcano



Specifications

Model	Volcano
Code	MSC4
Size (mm)	300x346x40
Box Qty	8
MOQ Qty	3 Boxes
NRC with 20mm Infill	0.80
NRC No Infill	0.65



Colours

The impact colours have on individuals is extraordinary. It can sway thinking, change actions, and cause reactions. It can irritate or soothe your eyes, raise your blood pressure or suppress your appetite.

At CSR Martini we know when colours are used in the right way they can add so much more to the space. Have design freedom with our extensive range of fabric colours and finishes.

Refer to the dECO Series Fabric Selector for further information on colours and finishes. For other finishing colour options, consult your CSR Martini representative

Installation

Design with Freedom.

Each 3D tile within the collection has a unique design that has been curated to create interchangeable patterns, allowing you to become the designer and change the look and feel of the room instantly at no additional labour cost. At CSR Martini we believe that innovation shouldn't only be in the products but also in the method of installation.

Our Essentials range comes with its own unique Martini installation template, designed to ensure you have a seamless fitting experience.

Our Signature range has no restrictions with designs. Our exclusive hexagon designed clip gives you the flexibility to take your design in any direction.

Environment

At CSR Martini, we believe we all have a role to play in looking after the environment. No doubt you feel the same.

To us, it's not just about creating exceptional quality products. We ensure our manufacturing impact, our footprint and every single touch point from production to final delivery is considered.

Why? Because as a responsible corporate citizen, we are committed to leaving our next generation and the world better than we found it.

But actions speak louder than words. We are proud to say we are leading the way by ensuring our products, along with our manufacturing process, have been certified to independent environmental and product health assessments.

- Products with recycled content reduce greenhouse gas emissions
- High reusable potential
- Products manufactured from thermally bonded polyester fibre have a minimum of 60% recycled fibre content from PET packaging such as empty drink bottles
- The products are 100% recyclable
- Volatile organic compounds (VOCs) generated in the manufacturing process is classified as low (0.01mg/m³)
- No ozone-depleting gases are used during the manufacturing process
- No red list chemicals are present
- Safe, non-irritant, non-toxic, and non-allergenic

CSR Martini is proudly:

- GreenTag^{Cert™} certified
- Environmental Product Declaration (EPD) certified in accordance with ISO 14025
- Product Health Declaration (PHD) certified
- Declare certified
- Suitable for Green Star™ projects

Safe Use Instructions Sheet (SUIS) can be downloaded from [csrmartini.com.au](https://www.csrmartini.com.au)





Proudly distributed by

Acoustek 

Acoustek-UK Ltd

Email **sales@acoustek-uk.com**
Phone **UK +44 (0)7394 442 520**
Visit **www.acoustek-uk.com**

Acoustek Asia

Email **sales@acoustek.com.au**
Phone **AUS +61 (0)418 792 788**
Visit **www.acoustek.com.au**

